

**DEUTSCHE TELEKOM  
SERVICES EUROPE  
CZECH REPUBLIC**



# COMPANY PRESENTATION OVERVIEW

- 01 Deutsche Telekom Group
- 02 Deutsche Telekom Services Europe
- 03 Deutsche Telekom Services Europe CZ
- 04 Our Departments and Teams



# DEUTSCHE TELEKOM GROUP



LEADING  
TELECOMMUNICATION  
COMPANY



HEADQUARTERS IN  
BONN, GERMANY



FORMED IN 1996  
(the former state-owned monopoly  
Deutsche Bundespost was privatized)



ACTIVE IN 36 COUNTRIES  
WORLDWIDE

# DEUTSCHE TELEKOM GROUP IN NUMBERS

**€ 114.4 bn** Revenue

**€ 36.5 bn** Adjusted EBITDA

**€ 8.8 bn** Free Cash-Flow

**207 000**

Employees worldwide

**Present in > 50 countries**

Germany, Europe and the USA: with own infrastructure

T-Systems: global presence & alliances via partners

**≈ 245** mn mobile customers

**≈ 25** mn fixed-network lines

**≈ 21** mn broadband lines

**≈ 8** m TV customers

Source: Annual Report 2022




# COMPANY PRESENTATION OVERVIEW

- 01 Deutsche Telekom Group
- 02 Deutsche Telekom Services Europe
- 03 Deutsche Telekom Services Europe CZ
- 04 Our Departments and Teams





A group of young people are shown at what appears to be a festival or concert. The image is heavily overlaid with a magenta color. In the foreground, a man on the left wears a cap and sunglasses, smiling. A woman in the center holds up a smartphone. On the right, a man with long hair and a hat holds a stick. The background shows other people and festival structures.

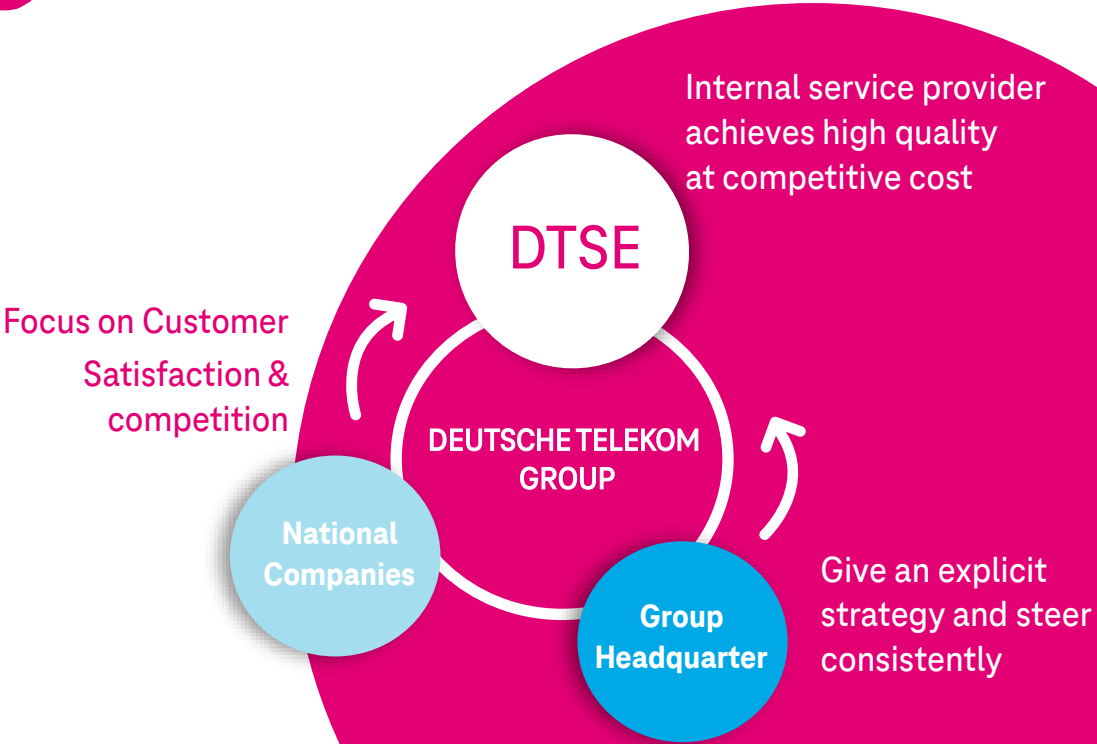
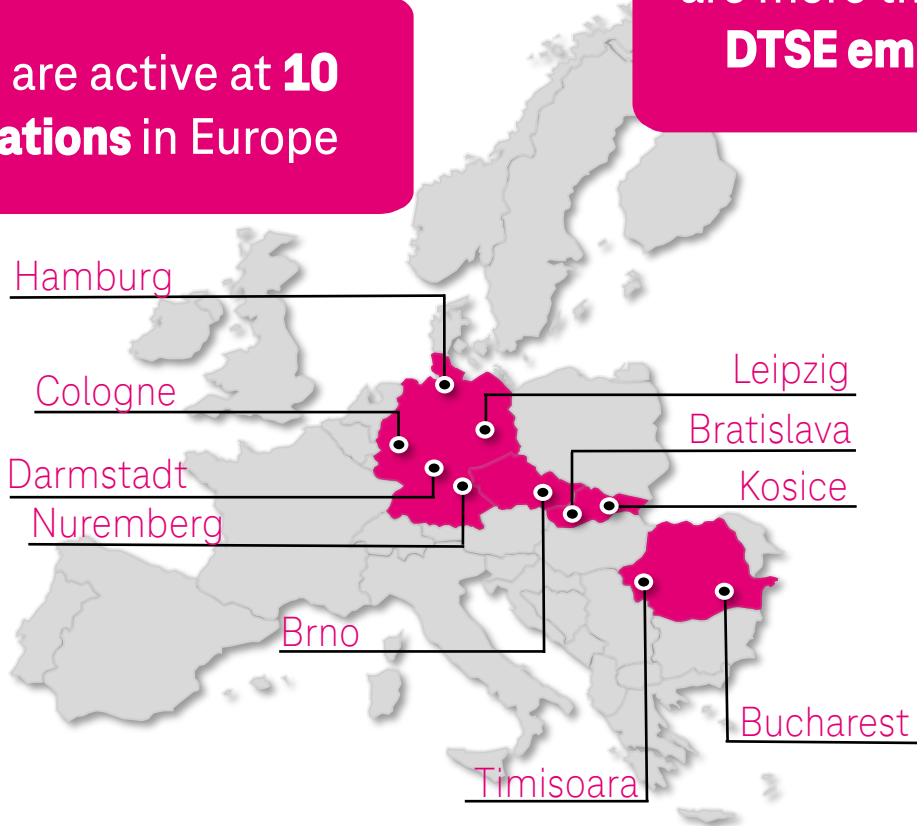
**WE ARE THE FIRST CHOICE SERVICE  
PROVIDER BY REALIZING THE  
FUTURE TELCO AND DRIVING  
BUSINESS PROFITABILITY WITH  
HAPPY CUSTOMERS AND  
DEDICATED EMPLOYEES**

# DEUTSCHE TELEKOM SERVICE EUROPE

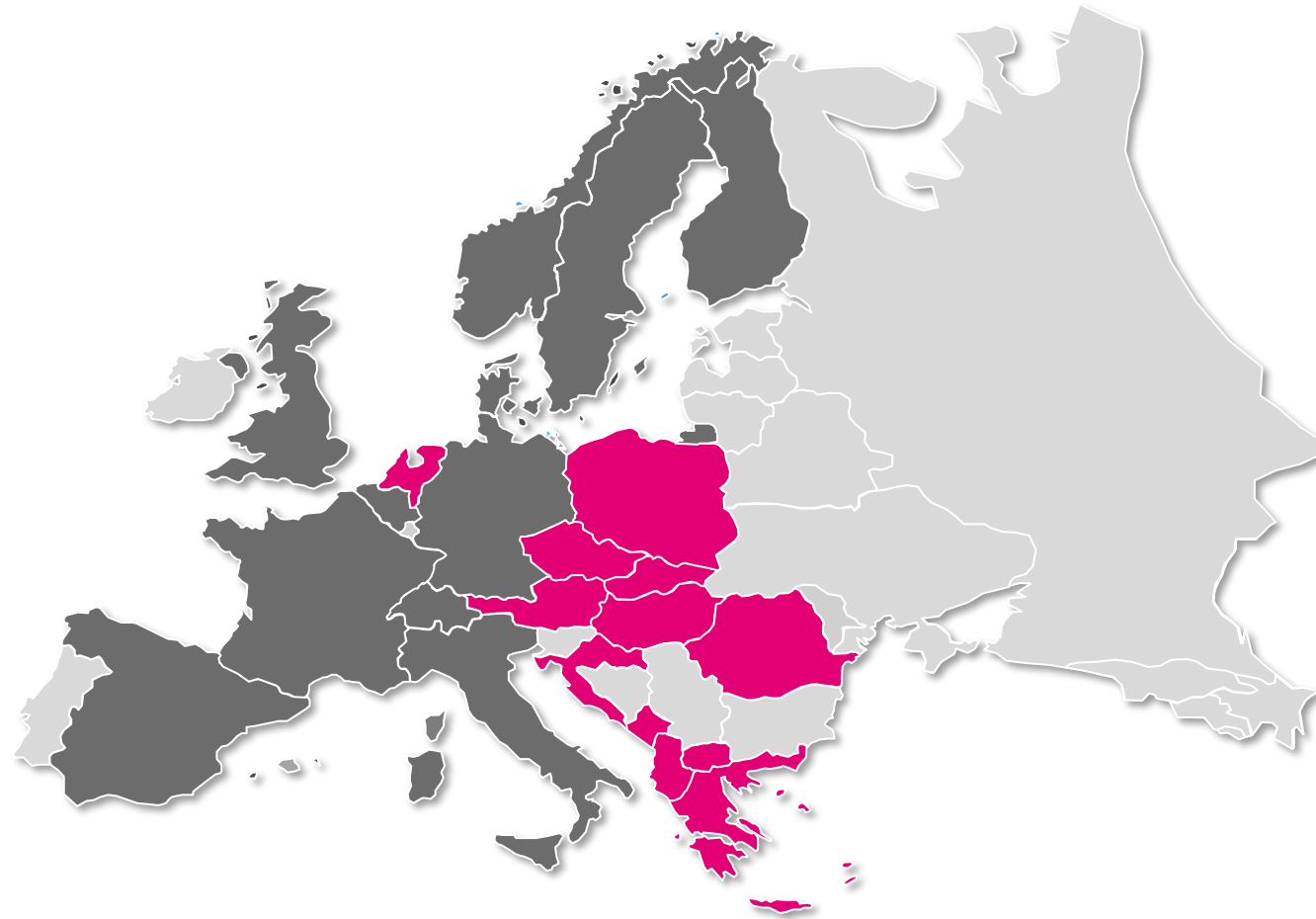
We are active at **10 locations** in Europe


Across Europe, there are more than **3.900\*** DTSE employees

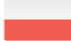












\*as of 12.2022



# DEUTSCHE TELEKOM SERVICE EUROPE



 National Companies  
and T-Systems Units  
 T-Systems Units

 T-Mobile Polska	 Telekom Romania
 T-Mobile CZ	 Hrvatski Telekom
 T-Mobile Austria	 Telekom Albania
 T-Mobile Netherlands	 Crnogorski Telekom
 Telekom Deutschland	 Makedonski Telekom
 Slovak Telekom	 OTE Greece
 Magyar Telekom	



# OUR STRATEGY



# OUR MANAGEMENT



**Guillaume Maisondieu**

Chairman of DTSE SE



**Thomas Laux**

Board member for Finance



**Nicholas Hölting**

Board member for HR



**Strategy & Business Development**

Jakob Poggensee



**Design Authorities**

Tobias Trautmann



**Customer Finance**

Andreas Holtmann



**Accounting to Report**

Oliver Leister



**Plan to Execute**

Jürgen Wittland



**Hire-to-Retire**

Matthias Maschke



**Procure-to-Pay**

Peter Tasev



**Finance Operations & IT Steering**

Anne Scholl Seimetz



**Enterprise Data Management**

Hans-Jörg Glaß



**Technology Transformation Mgmt.**

Dirk Keweloh



**Comm. Portal & Interaction Services**

André Dybek



**Compliance Services & ICS**

Thomas Röhrig



**HR Business Partner**

Wolfgang G. Hahn



**HR Business Partner**

Thomas Mombauer

## International Locations

Cross-divisional service providers for all units



**DTSE Romania**

Madalin Popescu



**DTSE Slovakia**

Marek Resovský



**DTSE Czech Republic**

Marek Resovský


# COMPANY PRESENTATION OVERVIEW

- 01 Deutsche Telekom Group
- 02 Deutsche Telekom Services Europe
- 03 Deutsche Telekom Services Europe CZ
- 04 Our Departments and Teams






# DTSE CZ

 **Winner of “Value Creation”** award by the ABSL Czech Republic in 2022, winner of **“CEE Business Services Awards 2021”** in the nomination **“Business Services Firm of the Year”** and winner of **“Employer Branding & People engagement ”** award by the ABSL Czech Republic in 2021

 Driving cutting-edge projects for the whole group - focus on **Accounting, Procurement, Process Mining, Data Analytics and Artificial Intelligence**

 **Strong know-how** in the areas of Accounting, Finance, Procurement, Strategy and Business Development

 Growth is based on the promotion of **startup mindset and experimental environment**



# SUPPORTING THE LEADING EUROPEAN TELCO

A map of Europe with three callout boxes. The box 'Engaging employees' is positioned over Northern Europe. The box 'Growing with innovations' is positioned over Western Europe. The box 'Improving competitiveness' is positioned over Eastern Europe. The city of Brno is marked with a red dot in the Czech Republic, which is highlighted in dark grey.

## Engaging employees

Design dialogue and collaboration,  
superior branding and label market  
reputation

## Growing with innovations

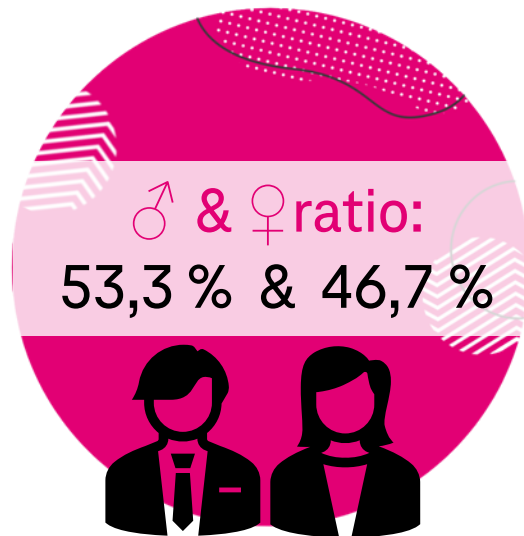
Promote and realize innovations, shape  
new products and technologies

## Improving competitiveness

Be part of the success story, efficient  
growth through best practice and  
know-how sharing

BRNO

# DTSE CZ IN FIGURES





# OUR GUIDING PRINCIPLES

## DELIGHT OUR CUSTOMERS



We are the trusted companion and help our customers with achieving their goals - with simple, innovative and human-centred experiences

## GET THINGS DONE



We are entrepreneurial and solution-oriented – this is how we stay ahead of our competition.

## ACT WITH RESPECT AND INTEGRITY



We always live up to what we believe is right and fair, both inside and outside of our organization.

## TEAM TOGETHER – TEAM APART



We are one team.  
We challenge and empower one another.

## I AM T – COUNT ON ME



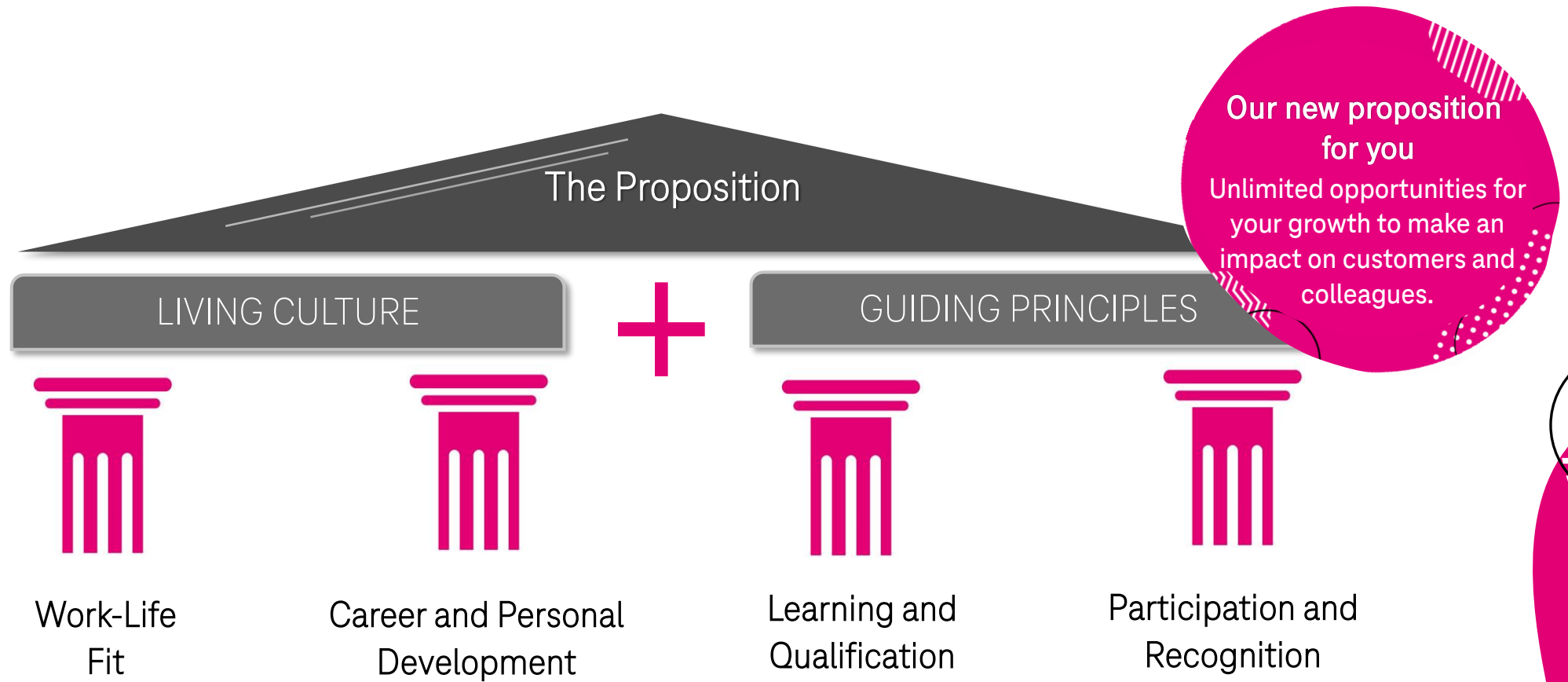
We are proud to be T. We act with passion, responsibility and commitment – trust means everything to us.

## STAY CURIOUS AND GROW



We are curious and embrace continuous learning. This mindset lets us grow as an organization and as individuals.

# STRONG BASIS FOR SUPPORTING THE PROPOSITION



# WORK – LIFE FIT

Flexible  
working hours

Work Life  
Coaching  
program

Yoga,  
Massages &  
Stretching  
classes

Hybrid Working

Healthy Days

Meetups and  
other Company  
Events



# LEARNING AND QUALIFICATION



## E-library

Portfolio of professional Literature available to download

## DTSE CZ CAMPUS

## Certifications

Long term programs in hard and soft skills



## Trainings



More than 5200 E-Trainings  
2 Platforms  
In-house Workshops

## PEER-2-PEER

## HR SUITE



## ACCA

# CAREER AND PERSONAL DEVELOPMENT

INTERNSHIPS



JOB ROTATION



PEER-2-PEER  
TRAINING



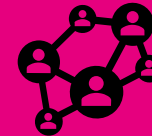
BRING YOUR  
OWN PROJECT



CAREER PATH



DIGI  
COMMUNITY



# CAREER AND PERSONAL DEVELOPMENT

CERTIFICATES  
OF RECOGNITION  
& APPRECIATION



BIRTHDAYS &  
ANNIVERSARIES  
CELEBRATION



AMBASSADOR  
PROGRAM



Happy to be  
a part of  
#DTSE CZ  
family...



# COMPANY PRESENTATION OVERVIEW

- 01 Deutsche Telekom Group
- 02 Deutsche Telekom Services Europe
- 03 Deutsche Telekom Services Europe CZ
- 04 Our Departments and Teams



# PTP ACCOUNTS PAYABLE



*Financial, administrative and clerical support*



*Assistance with month-end closing procedure*



**Team Lead**

**of Accounts Payable**

-  1 team
-  15 members
-  4 nationalities
-  35 average age



Preparing and then performing **check runs**.



Processing of **non-order-related incoming invoices** and all intercompany paper invoices in the standard One.Finance process.

Processing of invoices according to **legal, tax and internal requirements**.



Processing of the **2nd level** in the area of intercompany invoices.

# PTP COMPETENCE CENTER



*Procure-to-Pay First and Second Level Support*



*Support of process optimization  
for the complete Procure-to-Pay chain*



**Group Lead**

**of PTP CCE**



## First Level Support Team

Handling phone or written queries and tracking them in the ticketing tool (Procurement and One.Source support).

Different kinds of administration tasks (access creations, sourcing and contract management support, preparation of reports).



## Supplier Steering Team

to main activities belong personal care about core suppliers, booking of recurring and GR/IR postings, procurement support, vendor reconciliations and reverse factoring.

- 👤 2 teams
- 👤 21 members
- 👤 6 nationalities
- 👤 38 average age



# PTP DIGITALIZATION



*Data Analytics*



*AI Shared Services*



*Digitalization Projects*



**Digitalization**

**Group Lead**



PTP Process Manager /  
Digitalization Projects  
Coordinator



Senior Data Scientist /  
Data Analytics  
Coordinator



Senior Data Scientist /  
AI Projects Coordinator



## Digitalization Projects

focusing on creating, standardizing, improving and maintaining internal processes in cooperation with all other DTSE departments.

## Data Analytics

works with CELONIS to reconstruct and visualise the entire business process, which helps identify areas of action for the process improvements.

## AI Projects

helps in solving business problems for internal customers of DT Group and functions as an internal company consultancy service.

-  1 team
-  30 members
-  8 nationalities
-  35 average age





# ATR: ACCOUNTING TO REPORT



*Ensures consistent application of accounting policies and compliance with accounting directives*



*Prepares single-entity financial statements consolidated entities*



**Head of IFRS**

**Financial Closing**



**AAA Team Lead**



**AGL Team Lead**



**AAO Supervisor**



## **General Ledger (AGL)**

responsible for closing related activities in the area of GL including HR accounting, revenue and intercompany accounting.

## **Asset Accounting Closing (AAA)**

responsible for fixed assets accounting in the areas of methodology asset accounting, closing and reporting activities, inventories, customer care, automation of tasks and migrations & transitions of new processes.

## **Asset Accounting Operations (AAO)**

responsible for fixed assets accounting in areas of daily business fixed asset activities, closing preparation and tracking, reporting, quality assurance, and customer care.



- 1 team
- 54 members
- 6 nationalities
- 33.2 average age

# BACK OFFICE



*Responsible for all our „behind the scene“ operations that support colleagues from other departments as well as our clients, contractors and suppliers*



Acting Office Management and Procurement Expert



Communication Specialist



Security Officer, Process and Project Manager



Contract Manager



ICS Manager



International Compliance & ICS Manager



- 1 team
- 7 members
- 6 nationalities
- 35 average age



**ICS:** Contract Management, Data Privacy, and Compliance.

**MD Office:** Communication, Facility and Office Management, and Procurement.



# STRATEGY AND BUSINESS DEVELOPMENT (SBD)



*Helps develop its target picture and implement strategic measures of medium-to-long-term focus*



Strategy and Business Development Expert



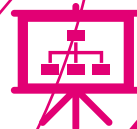
Board Support Expert



Board & Projects Support



Customer Satisfaction Expert



## Strategy team

creates fact-based analytical recommendations to senior management on topics influencing DTSE's entities in Germany, Czech Republic, Romania and Slovakia.

## Board support

is responsible for the efficient organization of Management Board meetings, which is DTSE's decision-making body on strategic topics.



- 1 team
- 4 members
- 4 nationalities
- 32,3 average age



# FEE: ERP TRANSFORMATION



*Technology Infrastructure*



*ERP Project Services*



*ERP CoE Automation*



**Group Lead**

**of ERP  
Transformation**



-  1 team
-  4 members
-  3 nationalities
-  43 average age



Responsible for **network & IT workplace** management, **IT equipment & systems** setup and operation, **IT Service Desk** administration, **SW licence** management, fixed and **mobile Telco services** management, **Roles & Authorizations** management, **ERP Project** management, **SAP consultancy**.



# HR Department



*Taking care of employee's journey in the company*



HR Business Partner



HR Director



HR Business Partner



HR Generalist



HR Projects Manager



HR Specialist

- 1 team
- 5 members
- 36 average age

## Care of potential employees

communication with candidates, conduction of interviews, building hiring strategies, talent acquisition through social sites, employer branding and presenting our company externally

## Care of our employees

providing an adaptation plan, helping with all work-related topics, conducting learning and training activities and personal development, taking care of the payroll process and cooperating with the international HR team on the different kinds of projects

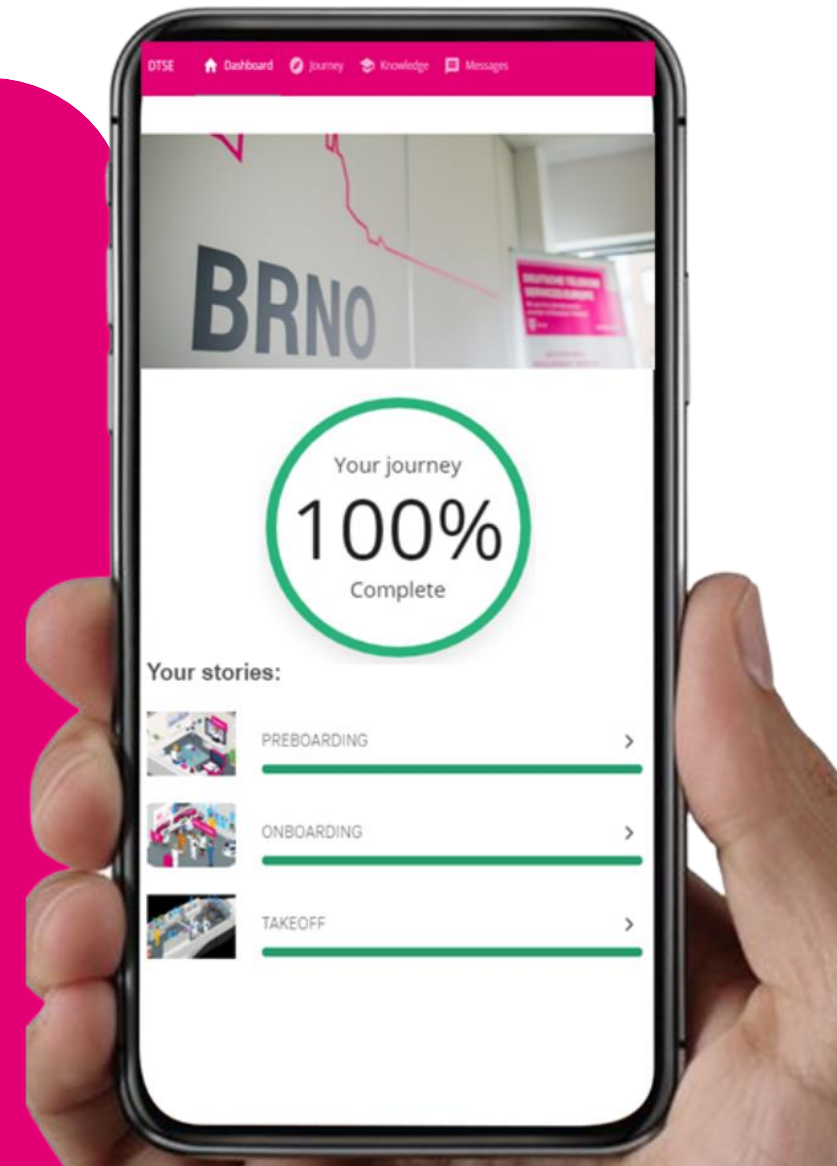
# CAREER AND PERSONAL DEVELOPMENT

## ONBOARDING TOOL APPICAL

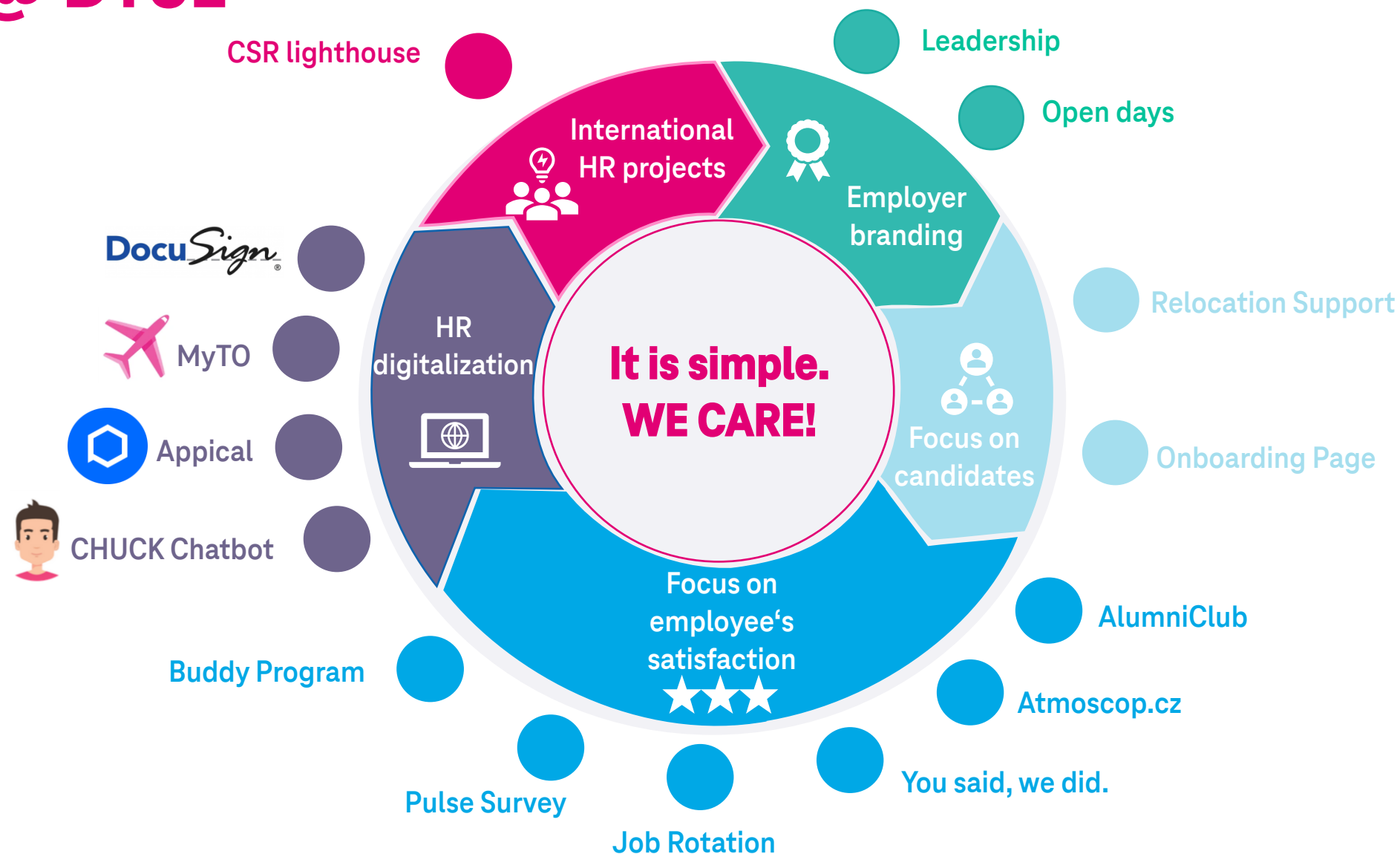


### 3 phases:

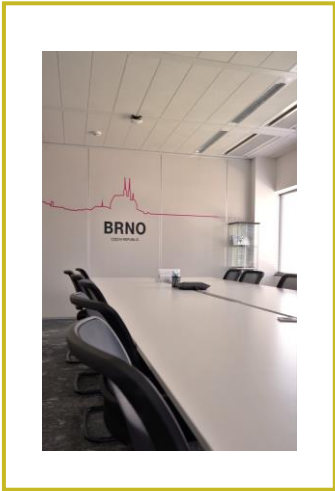
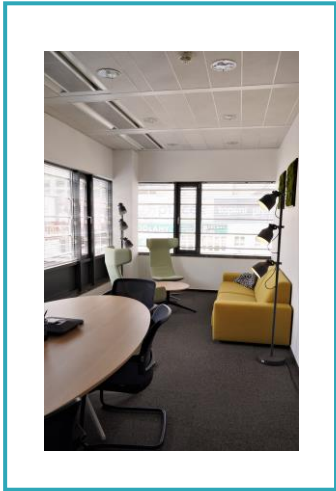
- Preboarding (before the start at DTSE CZ)
- Onboarding (now until the end of the 1st month)
- Take off (2nd month until the end of probation period)



# HR @ DTSE



# DTSE CZ OFFICE



NEWLY RENOVATED  
AND READY TO  
WELCOME  
EVERYONE!





# OUR HOME

